



[www.chrystals.co.im](http://www.chrystals.co.im)

Castle Lake House with 1 acre, Ballamona Straight, Jurby, IM7 3AP

**Asking Price £340,000**

## Castle Lake House with 1 acre, Ballamona Straight, Jurby, IM7 3AP

**Asking Price £340,000**

A detached country cottage requiring complete modernisation, useful range of outbuildings having good scope and an adjoining 1 acre of pasture. The cottage has 3 bedrooms, 2 reception rooms, Bathroom, Kitchen and Utility. Outside is a single storey range of buildings in local stone and brick with excellent scope for conversion (subject to planning). The 1 acre paddock has roadside access and is very level. A further 6 acre field on the opposite side of the Ballamona Straight is available via separate negotiation.





## LOCATION

Travel out of Ramsey on the Jurby Road and continue approx 6.5 miles through the crossroads at St Judes and Sandygate. Continue along the road where the property will be found on the right hand side just clearly identified by our For Sale board.

## **HALL**

12' 6" x 3' 10" (3.81m x 1.17m)

Stairs to first floor.

## **DINING ROOM**

11' 9" x 12' 6" (3.58m x 3.81m)

Open fire. Bay window.

## **SITTING ROOM**

10' 5" x 12' 6" (3.17m x 3.81m)

## **KITCHEN**

9' 3" x 6' 10" (2.82m x 2.08m)

## **UTILITY**

9' 4" x 7' 10" (2.84m x 2.39m)

Door to outside.

## **PANTRY**

5' 8" x 6' 9" (1.73m x 2.06m)

## **FIRST FLOOR**

## **BATHROOM**

9' 4" x 7' 0" (2.84m x 2.13m)

## **BEDROOM 1**

9' 11" x 13' 6" (3.02m x 4.11m)

## **BEDROOM 2**

12' 1" x 12' 6" (3.68m x 3.81m)

Open fire.

## **BEDROOM 3**

8' 2" x 4' 10" (2.49m x 1.47m)

## **OUTSIDE**

Single storey range of buildings in local stone and brick with excellent scope for conversion (subject to planning). The 1 acre paddock has roadside access and is very level.

## **ADDITIONAL LAND AVAILABLE**

A further 6 acre field on the opposite side of the Ballamona Straight is available via separate negotiation.

## **SERVICES**

Mains water and electricity. Private drainage.

## **VIEWING**

We recommend an external viewing of the property before requesting an accompanied internal viewing. Please inform us if you are unable to keep appointments.

## **POSSESSION**

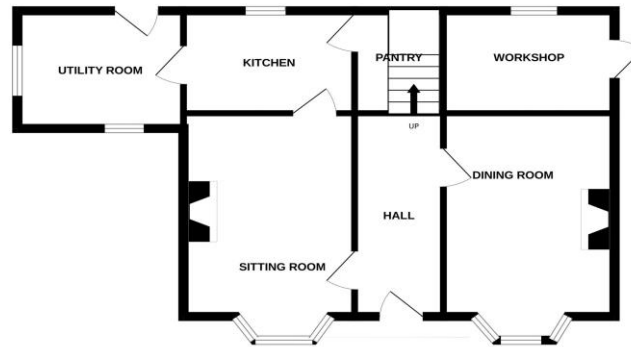
Vacant possession on completion of purchase. The company do not hold themselves responsible for any expenses which may be incurred in visiting the same should it prove unsuitable or have been let, sold or withdrawn. **DISCLAIMER** - Notice is hereby given that these particulars, although believed to be correct do not form part of an offer or a contract. Neither the Vendor nor Chrystals, nor any person in

their employment, makes or has the authority to make any representation or warranty in relation to the property. The Agents whilst endeavouring to ensure complete accuracy, cannot accept liability for any error or errors in the particulars stated, and a prospective purchaser should rely upon his or her own enquiries and inspection. All Statements contained in these particulars as to this property are made without responsibility on the part of Chrystals or the vendors or lessors.

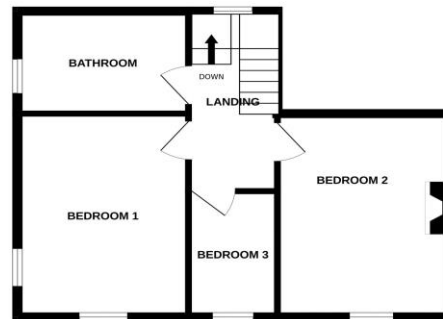




GROUND FLOOR



1ST FLOOR 



Measurements are approximate. Not to scale. Illustrative purposes only  
Made with Metropix ©2023

Since 1854



**DOUGLAS**  
31 Victoria Street  
Douglas IM1 2SE  
T. 01624 623778  
E. douglas@chrystals.co.im

**PORT ERIN**  
23 Station Road  
Port Erin IM9 6RA  
T. 01624 833903  
E. porterin@chrystals.co.im

**COMMERCIAL**  
Douglas Office: 01624 625100, commercial@chrystals.co.im  
**RENTALS**  
Douglas Office: 01624 625300, douglasrentals@chrystals.co.im

Directors: Shane Magee M.R.I.C.S.; Neil Taggart BSc (Hons), M.R.I.C.S.; Joney Kerruish BSc (Hons), M.R.I.C.S.; Dafydd Lewis BSc (Hons), M.R.I.C.S., MA (Cantab), Dip Surv.Prac.; Consultants: Keith Kerruish Registered in the Isle of Man No. 34808, Chrystal Bros, Stott & Kerruish Ltd. Trading as Chrystals. Registered Office, 31 Victoria Street, Douglas, Isle of Man IM1 2SE.